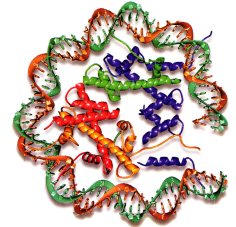


PhD Program in Molecular Biomedicine

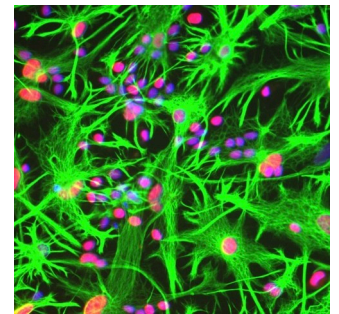
Monday, 26 November 2018 - 11:00

Seminar room, I floor, Q Building
Via Giorgieri 5, Trieste

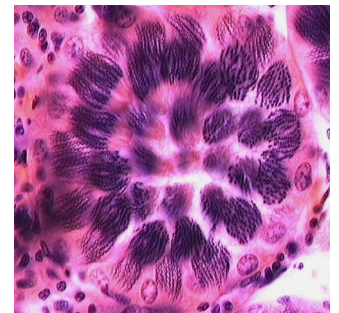


Dr. Andrea Ciliberto

IFOM -- Istituto Firc di Oncologia Molecolare
Milan – Italy



Introduction to quantitative approaches for understanding network properties



In this lecture, I will show how mathematical models are required to understand network properties, such as irreversibility, adaptation, memory, oscillations. I will develop step-by-step simple models with the students, and I will discuss biological examples. Finally, based on our recent work, I will discuss how the use of antimetabolites can foster the arising of chromosome missegregation, and how this can be prevented, based on a combination of models and experiments.

